



AVEROS ADVANCED RTLS SYSTEMS

Localization, Tracking and Navigation

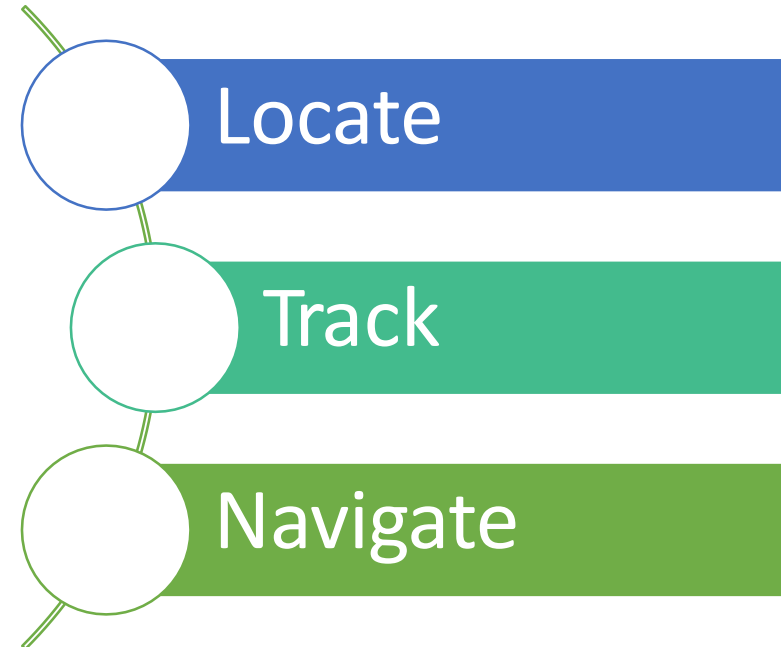
OVERVIEW



Averos provides advanced and innovative Location-based and RTLS (Real Time Location System) technological solutions that are intuitive, efficient, cost-effective and of high quality and reliability.

WE PROVIDE SOLUTIONS FOR

- *Real-Time Location System*
- *Visitor Tracking & Management System*
- *Indoor Positioning & Navigation System*



SOLUTIONS FOR



LIVE TRACK EMPLOYEES AND WORKFLOWS



LIVE TRACK AND MANAGE VISITORS

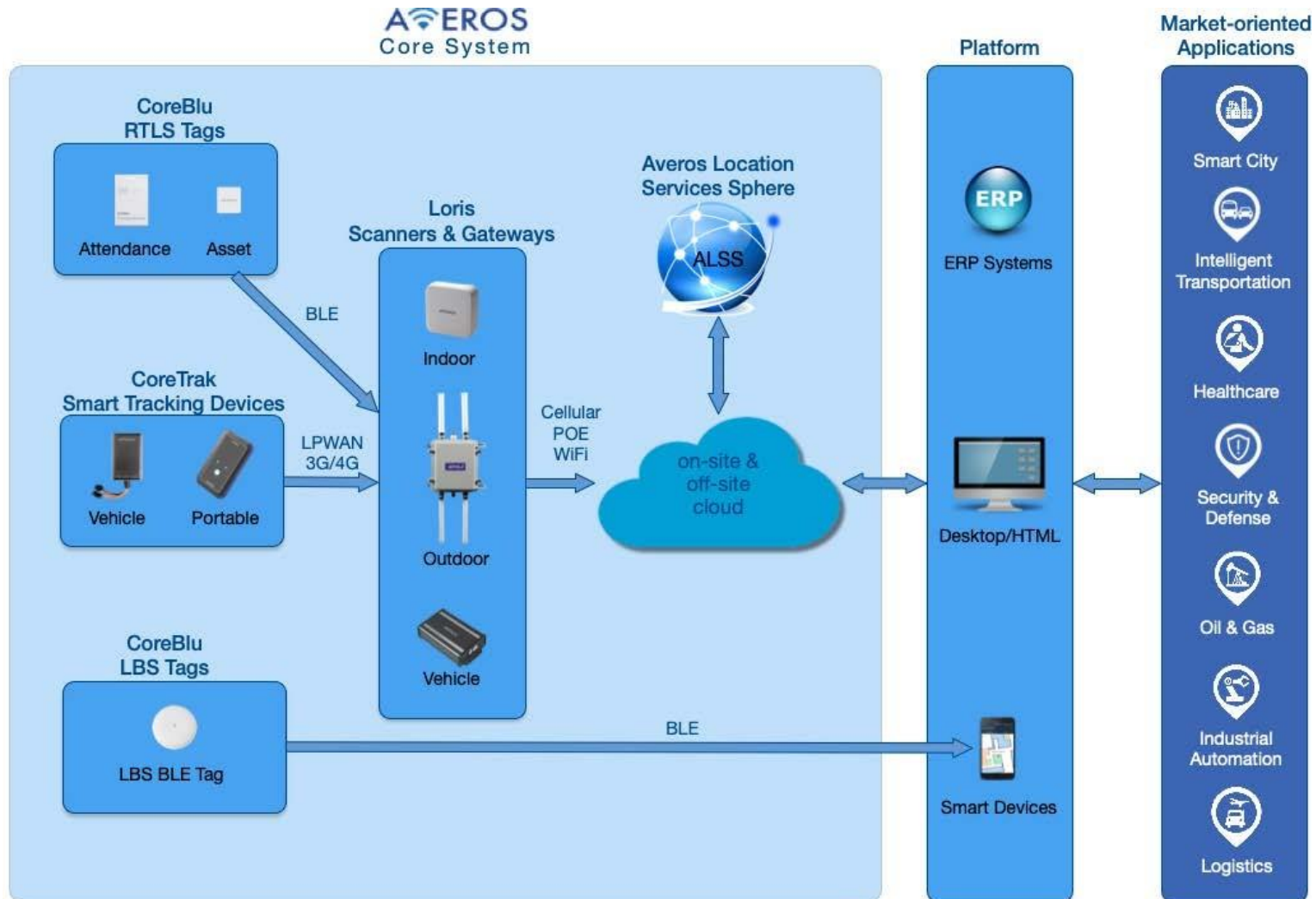


LIVE TRACK ASSETS AND INVENTORY

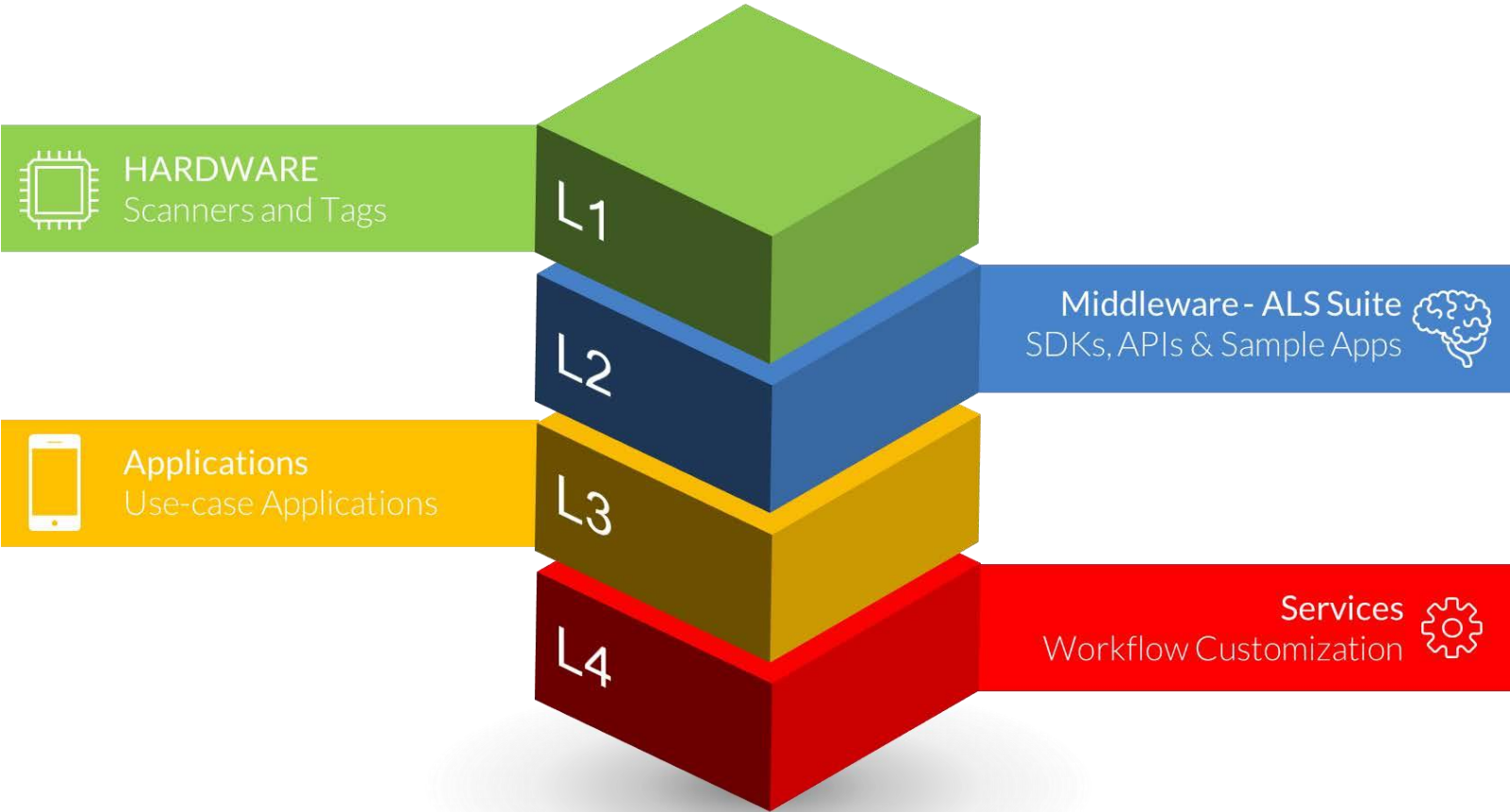


INDOOR NAVIGATION AND LOCALIZATION

OUR TECHNOLOGY STACK



MODULAR SYSTEMS PRODUCTS





PRODUCTS: TAGS AND SENSOR NODES

The CoreBlu product line features advanced high performance BLE beacon devices specific for a variety of applications with added sensors:

BLE-K1	BLE-PRO	BLE-X2A	BLE-XA	BLE-M1
				
36x26x5.5mm	70x70x22mm	85x55x4mm	85x55x4mm	32x23x3.3mm
Battery: 2 years @0.5Hz, replaceable	Battery: 7 years @0.5Hz, replaceable	Battery: 2 years @0.5Hz	Battery: 2 years @0.5Hz	Battery: 1 year, 4 months @0.3Hz
BLE, Buzzer & LED	BLE, Button, LED	BLE, accelerometer	BLE	BLE
People & Asset tracking	For LBS, Indoor Navigation	People Tracking	People Tracking	Asset Tracking



PRODUCTS: SCANNERS & GATEWAYS

Loris is a family of solutions that is built on advanced and innovative IoT hardware and software platforms providing BLE scanning, network communication and Integration for RTLS applications.



- Outdoor Scanner/Gateway
- Loris Pro 3G Model
- Sensor Scanning
 - BLE, Wifi, LoRa
- Power
 - Solar, AC, DC
- Connectivity
 - 3G/4G, POE, LoRa



- Indoor Scanner/Gateway
- Loris X2 Model
- Sensor Scanning
 - BLE
- Power
 - POE
- Connectivity
 - Ethernet (POE)



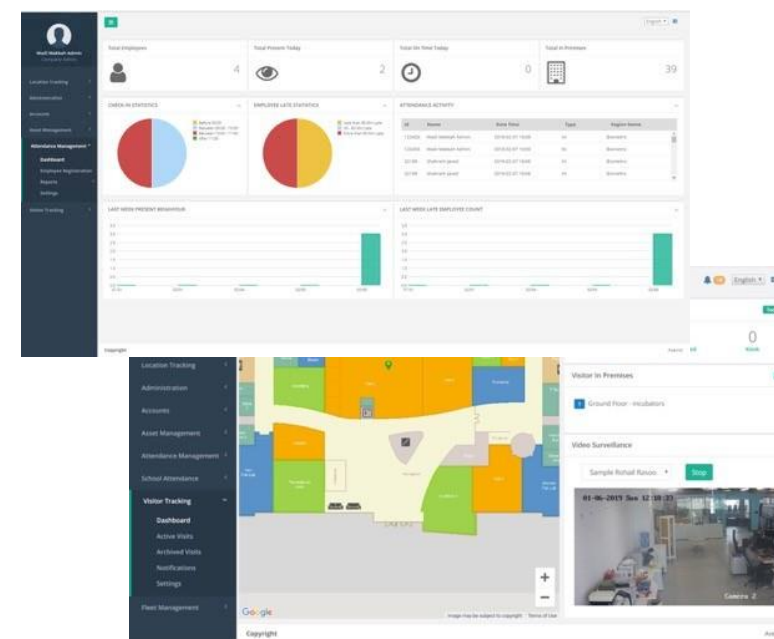
- In-Vehicle Tracker/Scanner
- Loris V1 Model
- Sensor Scanning
 - BLE, GPS, NFC
- Power
 - 12VDC
- Connectivity
 - 3G/4G

PRODUCTS: ALS SUITE

Averos Location Sphere Suite of Middleware software enables the development of advanced RTLS applications for various vertical market solutions.

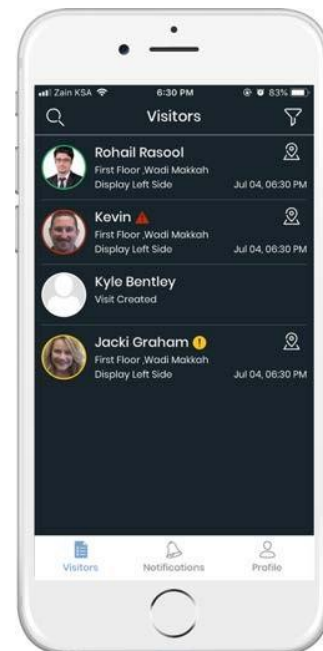
ALS Suite Features:

- Indoor Map Manager
- RTLS Engine (For Real-Time Location)
- MPS Engine (For Beacon base Mobile Positioning)
- Navigation Engine (For turn by turn navigation using MPS)
- Cloud and on-site hosted modules
- SDKs, APIs and Sample Apps
- White Labeled Demo Apps



PRODUCTS: MOBILE APPS

- *Averos range of standard Mobile Apps as tools for administration, configuration & Maintenance.*
- *Customizable Averos Mobile App allows authorized users to gain access to various kinds of services for live tracking and mapping people & assets*
- *HTML5, iOS & Android Version*



RTLS USE CASES



- *VISITOR TRACKING*
- *ATTENDANCE SYSTEM*
- *ASSET AND INVENTORY TRACKING*
- *ASSET TRANSPORTATION TRACKING*



RTLS BENEFITS

- *Real-Time Visibility*
- *Automatic Updates*
- *High-level Accuracy*
- *Automated Monitoring*
- *Increased Security*
- *Increased Productivity*



LBS USE CASES

- *SHOPPING MALLS*
- *MUSEUMS*
- *UNIVERSITY CAMPUSES*
- *AIRPORTS*
- *MEDICAL CENTERS*



LBS BENEFITS



- *Real-Time Navigation*
- *High Accuracy & Reliability*
- *Location based Interaction*
- *Location based Notifications & Alerts*
- *Fast Implementation*
- *Easy Mobile App integration*



OUR PARTNERS



**Business
Services**

Communications Solutions -
EU



IOT Systems



Smart Healthcare IT



Mobile Applications

STC
الاتصالات السعودية



Communications Solutions -
KSA



IoT & RTLS Solutions



Oil & Gas Technology



NAJHUM
ITC Solutions



3D Indoor Mapping



Emergency
Communications



Business Terminals



LPWAN Systems



Security Solutions



Contract Engineering



Secured IOT & Cybersecurity



HOLDING
ياس القابضة

Diversified Industries

END CUSTOMERS



Naqaba – Hajj Transport



Ministry of Hajj & Umrah



Presidency of the two Holy Mosques



وزارة الداخلية
Ministry of Interior



شرطة أبوظبي
ABU DHABI POLICE



Riyadh Int. Conventions & Exhibitions Center



MARKET SECTORS

- Transport
- Logistics
- Security
- Industrial
- Oil & Gas
- Events
- Retail