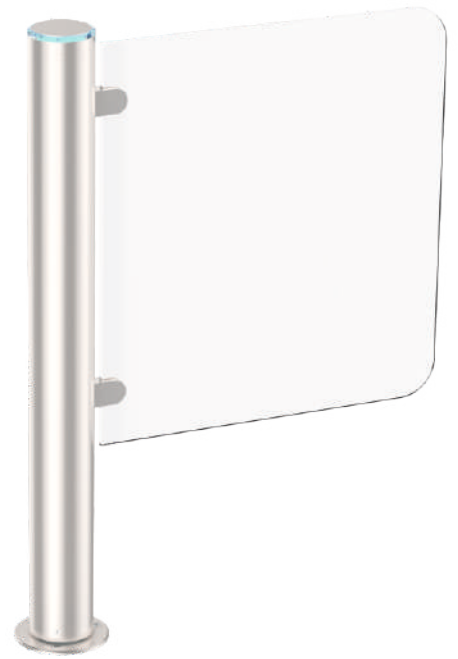


SWING GATES

GATE-GS SLIM

Gate-GS Slim is gate automation solution with a glass wing type. It is featured with smaller tube diameter insuring more elegant appearance. Along with standard dimensions, width and height of a glass can be enlarged.

Motorized gates include all the features and functionality as listed bellow.



ELEGANCE, LIGHTNESS AND SIMPLICITY MAKE THE SERVO-TYPE SWING GATE
INDISPENSABLE AS A PART OF ACCESS CONTROL SYSTEM

 650/900*
mm
PASSAGE WIDTH

 IP 41-65**
PROTECTIVE LEVEL


PASSAGE FOR DISABLED


MOTORIZED


BI-DIRECTIONAL

Advantages

- Extra slim gate post - only 101 mm
- Solution for disabled and trolley access
- Appropriate addition to other TiSO turnstiles
- Successful combination of affordable price and high quality
- Steadfast housing suitable for high traffic areas
- Can be integrated with any type of access control systems
- Low power consumption
- Left hand, right hand and double-sided opening are available
- Low noise system operation
- Gate housing could be adapted for both indoor and outdoor installations
- Can be mounted on a mobile platform (TiSO Frame-M)

Standard

- 3 types of LED indication (green, red, blue)
- Wired remote control panel

Options

- Connection to additional external stand with integrated passes counter/RFID device/coin acceptor push button/fingerprint/barcode/QR-code reader etc.)
- Radio controller
- Heating function for external installation
- Automatic opening when power goes off
- Passage width may vary upon client's request

* other width available optionally

** first figure is standard, all other available upon request



www.tiso.global
+380 (44) 291-21-11
e-mail: sales@tiso.global



Technical Specifications:

Unit width, mm	701/950
Unit diameter, mm	150
Unit height, mm	1000
Unit weight, kg (not more)	22
Mechanism	Motorized

Controlled by:



access control system;

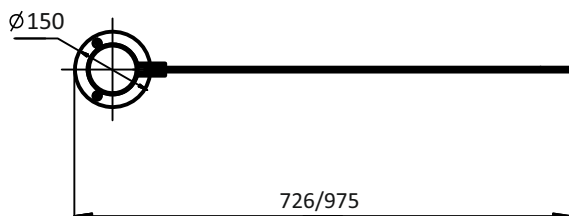
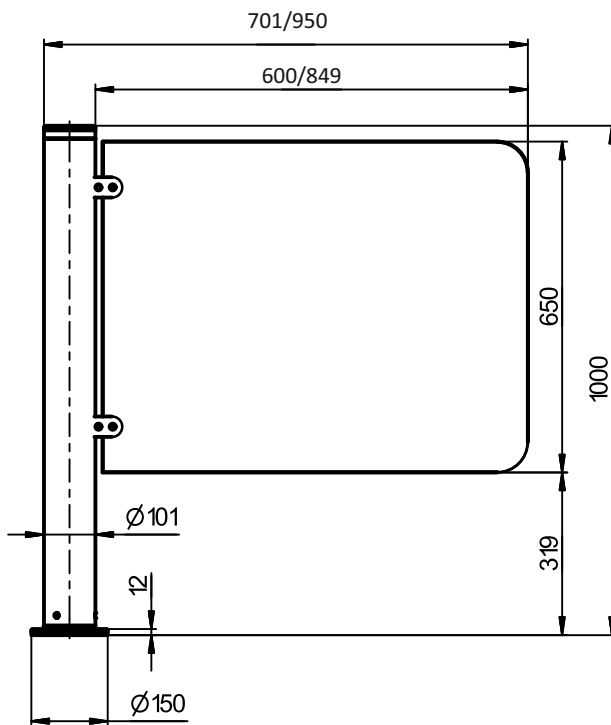


manual control

When power goes OFF both directions are free.

Electrical Specifications:

- Voltage:
 - from the AC (100-240)V, 50/60Hz;
 - from a DC source 12 V;
- Maximum power consumption 55W per pass;



Materials

Standard housing	Brushed SS AISI 304
Available housing	Brushed SS AISI 316 Polished SS AISI 304 Polished SS AISI 316 Powder coated RAL

Installation areas:

- Governmental Institutions
- Military Bases
- Nuclear Power Plants
- Production sites (Industrial Plants)
- Commercial areas
- Financial institutions
- Airport Premises
- Business (Office) Centers
- Hotels
- Sport Complexes
- Recreation areas
- Urban areas
- Education Institutions
- others