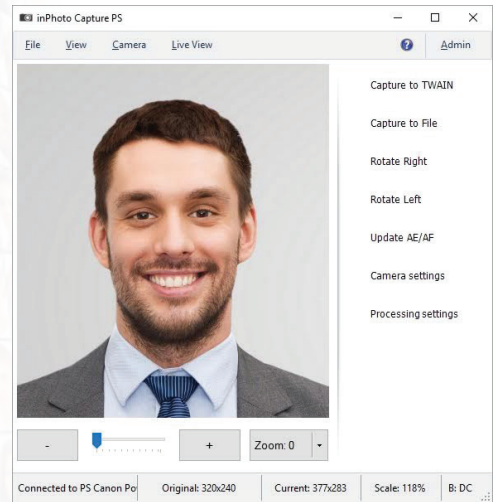


inPhoto Capture PS Software

inPhoto Capture PS - Camera Unlocked To Your Control



inPhoto Capture PS

If you are looking for a more advanced remote camera control solution for taking ID pictures, you should definitely check out inPhoto Capture PS - another of our products providing access to a larger range of camera options. With this full-featured ID photo preparation app, capturing top-class photos for passes, licenses and other documents becomes even easier. Offering the same basic set of functions as inPhoto ID PS, the application expands your technical abilities by supporting full functionality of professional-level cameras. That can greatly enhance the quality of your ID images and help streamline your work.

Main features:

- Canon PowerShot models supported
- Live preview from camera
- All supported settings control
- Camera optical zoom control
- Auto and manual exposure modes supported
- TWAIN supported
- Automated ID photo processing
- Automated processing for objects on background
- Background correction
- Multiple cameras auto switching
- Time-lapse and timer capture

Benefits:

- **Professional Software for ID Photo processing**
inPhoto Capture PS includes everything you need to create identification photos in a single application.
- **Smart & Intuitive interface**
inPhoto Capture PS has a layout that makes it easy to use to control PS cameras and create photo id images.
- **Widely compatible product**
The features of our program are compatible with many PS cameras and any type of id photo software.
- **Effective technical support**
You may contact us at any time with questions or requests for support.

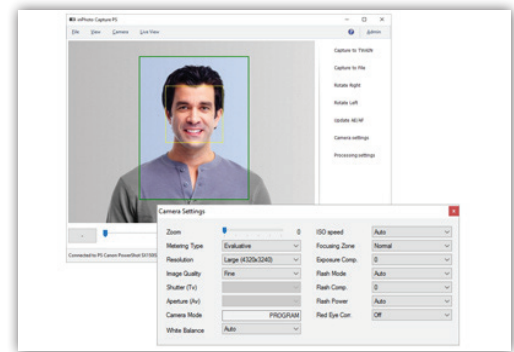


Contacts:

www.IDPhotoCapture.com
info@idphotocapture.com

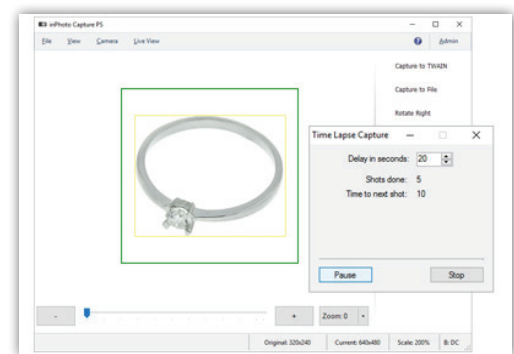
Better shooting control

The camera choice is undoubtedly crucial for picture quality. While inPhoto Capture PS supports the same selection of camera models as inPhoto ID PS, it allows you to tap into their full functionality and use more complex, previously unavailable camera parameters. While ID PS only works in 'Auto' mode, which is enough for regular shooting conditions, Capture PS supports manual exposure control and gives you access to a wider range of functions with the ability to capture clearer, better processed, and more professional images. inPhoto Capture PS will take your photography to a new level.



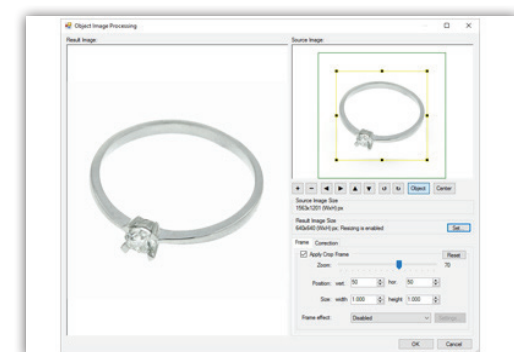
Extended function support

The app offers even more options for convenient and high-quality shooting. In addition to all of the ID PS functionality, it includes such functions as timer and time lapse capture that will significantly facilitate your daily tasks. Besides, inPhoto Capture allows you to automatically switch between several cameras doing the same amount of work in less time. Just one click can set any number of cameras shooting at fixed intervals without your participation! All this gives you much more control over the process and makes it possible to achieve impressive results with minimal effort.



Object detection

inPhoto Capture PS can automatically recognize not only faces, but also any object in the background. You can set the app to identify the object you need - for instance, certain items in the internet store. The image will be captured and processed in line with the current settings that can be changed any second to meet your particular requirements. You won't have to spend precious time on manual cropping and bulky editing - the app will do most of the job for you.



System requirements :

- Windows 10/8/7/Vista/XP
- both 64bit and 32bit supported
- 50Mb free disk space
- Windows compatible PS camera



Recommended: Canon PowerShot SX420

- 20.0 Megapixel Image Sensor
- 42x Optical Zoom
- DIGIC 4+ Image Processor



Recommended: Canon PowerShot ELPH180 / IXUS 175

- 20.0 Megapixel Image Sensor
- 8x Optical Zoom
- DIGIC 4+ Image Processor

Satisfaction Guarantee

If you are not satisfied with this solution, you are free to choose an alternative from our selection of products for various camera types.



inPhoto ID Webcam

Entry-level solution to control and capture images with any webcam. Cheap and easy, but suitable for general ID tasks.



inPhoto Capture SLR

Premium quality solution for SLR digital cameras. High-powered flash, excellent live view and picture quality.