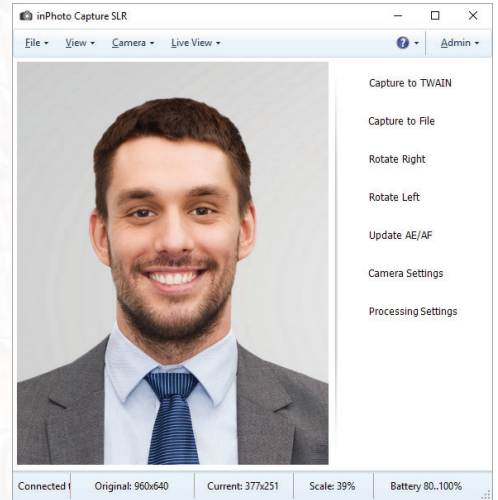


# inPhoto Capture SLR Software

## inPhoto Capture SLR - Camera Unlocked To Your Control



### inPhoto Capture SLR

inPhoto Capture SLR assists businesses in their growth and development speeding up the process of making ID or products photos. It offers convenience and extensive control over Canon EOS cameras. The product helps to make professional photos and always achieve excellent results. Dealing with easy to use and simple interface saves a lot of time and minimizes the risk of mistakes.

#### Main features:

- Canon EOS models supported
- Live preview from camera
- All supported settings control
- Auto and manual exposure modes supported
- Auto focus, manual focus mode and control supported
- TWAIN supported
- Automated ID photo processing
- Automated processing for objects on background
- Background correction

#### Benefits:

- **Professional Software for ID Photo processing**  
inPhoto Capture SLR offers great functionality in shooting and processing identification document photos.
- **Smart & Intuitive interface**  
inPhoto Capture SLR features a user-friendly layout that makes photo processing clear and simple.
- **Real-time control**  
The application allows adjusting the best camera angle and choosing the necessary settings in a real-time mode.
- **Effective technical support**  
Feel free to contact our team anytime in case you have any questions on the software we provide.

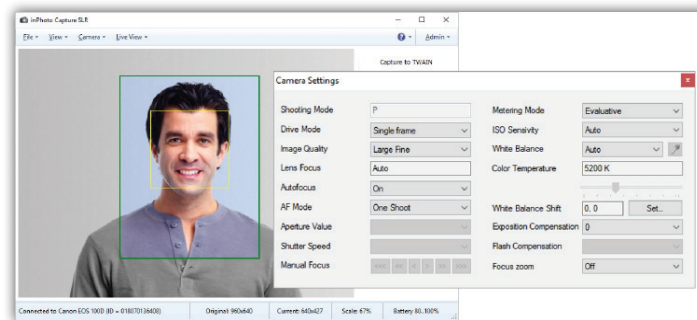


#### Contacts:

[www.IDPhotoCapture.com](http://www.IDPhotoCapture.com)  
[info@idphotocapture.com](mailto:info@idphotocapture.com)

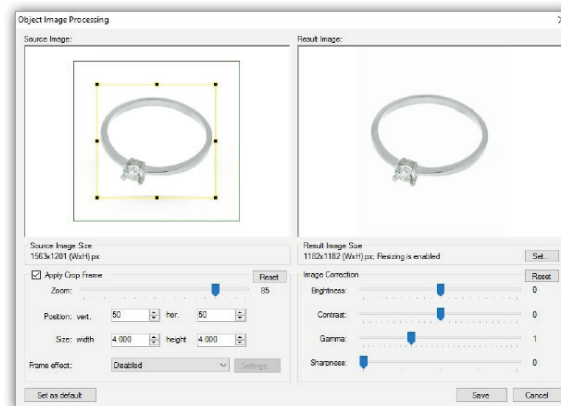
## Better shooting control

While inPhoto Capture SLR supports the same selection of camera models as inPhoto ID SLR, it allows you to tap into their full functionality and use more complex, previously unavailable camera parameters. With the help of this application, you can change exposure settings (such as aperture, shutter and exposure compensation), shooting mode settings (including sensitivity and white balance) and captured image settings (resolution and compression). Our application also offers remote control of focus mode and fine tune of manual focus. Everything you might need for taking photos can be controlled from your PC quickly and efficiently.



## Object detection

inPhoto Capture SLR can automatically recognize not only faces, but also any object in the background. You can set the app to identify the object you need - for instance, certain items in the internet store. The image will be captured and processed in line with the current settings that can be changed any second to meet your particular requirements. You won't have to spend precious time on manual cropping and bulky editing - the app will do most of the job for you.



### System requirements :

- Windows 10/8/7
- both 64bit and 32bit supported
- 50Mb free disk space
- Windows compatible SLR camera



### Recommended: Canon EOS Rebel T6 / EOS 1300D

- Entry-level SLR camera
- 18.0 Megapixel APS-C Sensor
- DIGIC 4+ Image Processor



### Recommended: Canon EOS Rebel SL1 / EOS 100D

- Smallest SLR camera
- 18.0 Megapixel APS-C Sensor
- DIGIC 5 Image Processor

### Satisfaction Guarantee

If you are not satisfied with this solution, you are free to choose an alternative from our selection of products for various camera types.



### inPhoto ID Webcam

Entry-level solution to control and capture images with any webcam. Cheap and easy, but suitable for general ID tasks.



### inPhoto ID PS

Most valuable solution for compact digital cameras. Built-in flash, optical zoom, live view and good quality.